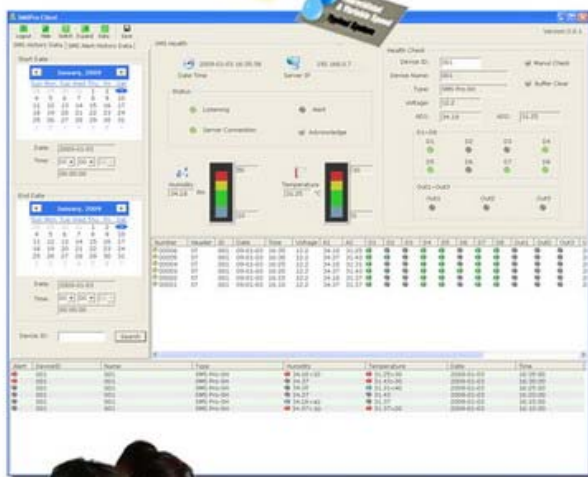


Temperature & Humidity SMS Alert Controller

Smart Energy Control ...

Energy Saving, Environment & Properties Protection



- Keep track of temperature & humidity
- Alert user via SMS on high/low temperature or humidity
- Control of other equipments e.g. air ventilation or dehumidifier
- Management Software Handling multi controllers in multi-sites
- Internal Rechargeable Battery No external power source needed

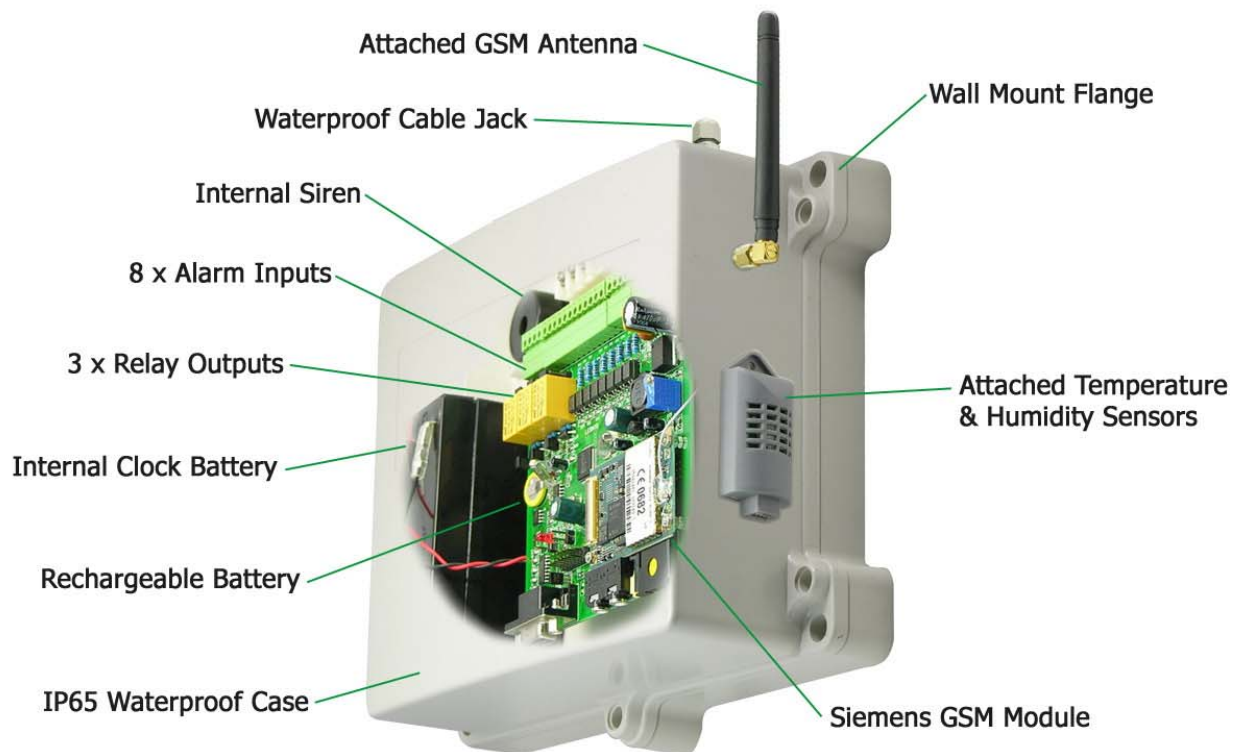
Simple Installation & Setup

- SMS Alert Controller is designed and built for easy user installation.
- All the necessary components are assembled inside the waterproof enclosure.
- Signal cables can be wired through the water tight cable jack.



Three simple steps starting the unit:

1. Insert the SIM card
2. Connecting the internal rechargeable battery
3. Cover the case, and hang it on the wall



Options:



Quad Band GSM Module



External Sensors



External Adhesive GSM Antenna



Application

Temperature & Humidity SMS Alert Controller can be utilized in monitoring the environmental condition for commercial, medical, food, storage, weather station, military, manufacturing industries.

It makes use of SMS to alert users of temperature and humidity conditions via SMS. By implementing the bundled Server/Client Software and GSM modem, a management system of multi-controllers can be built up to monitor a number of remote sites in one single centre.



Laboratory

Cold Storage

Food Processing

Medical Research

Food Storage

Data Centre

When will the controller sends the data?

- On Schedule in periodic interval programmable by user
- Manual Check by user via SMS command
- Alarm SMS when temperature/humidity is higher than user preset values
- Alarm SMS when temperature/humidity is lower than user preset values
- Alarm SMS when input is triggered
- Alarm SMS when power supply voltage is low





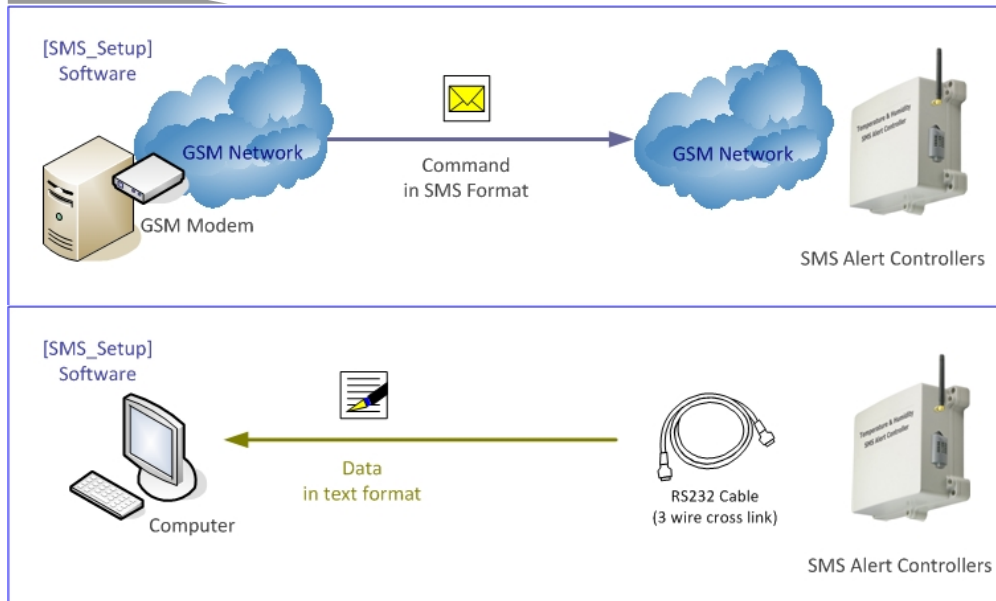
Software

Complete set of software is ready for working with [SMS Alert Controller].

Besides using mobile phone in sending command or receiving data, GSM modem will take advantage of computer software in:

1. Setting up the controller configuration
2. Receiving the live data from controllers, and maintain the historical database
3. Allowing a number of client computers to access the data over the network

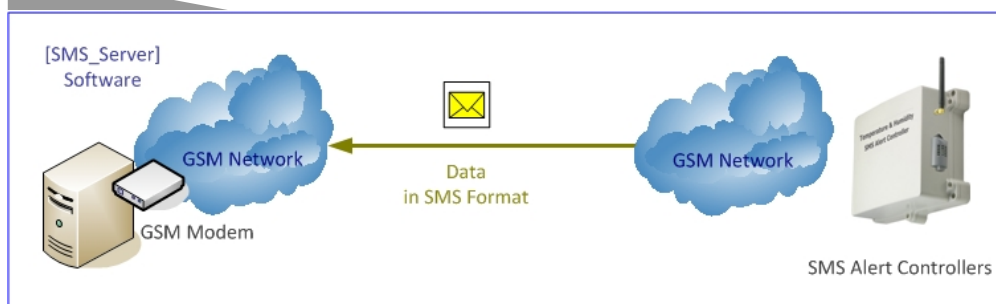
Setup



Setup software

- Modify the configuration of controllers
- Check the health status of controllers
- Remote setup via SMS
- Local setup via RS232

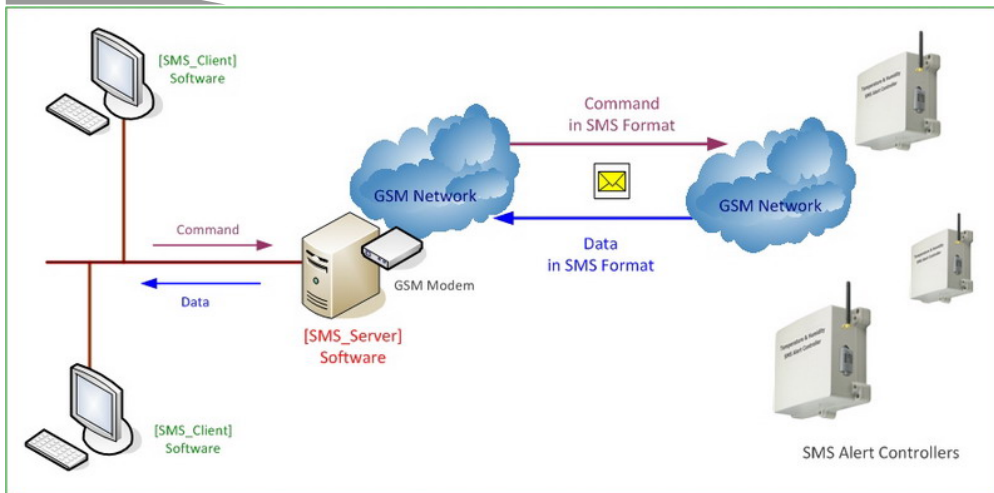
Server



Server software

- Keep receiving the SMS from controllers
- Maintain the historical records in MySQL database
- Manage clients in accessing the data
- Alert clients in alarm SMS

Client



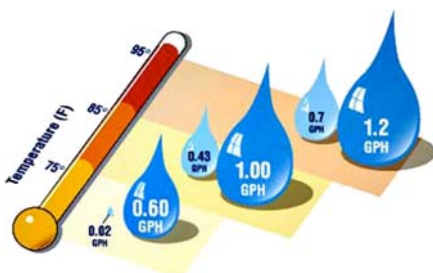
Client software

- Keep tracking of temperature/humidity from the server
- Alert user on alarm temperature or humidity
- Manage live data from multi-sites
- Manage controllers in multi-sites

The image displays two screenshots of the SMSPro software. The top screenshot shows the **SMSPro Client** interface, which includes a calendar for January 2009, a status bar showing 'Listening' and 'Server Connection', and a main display area with multiple sensor cards. Each card shows real-time data for Humidity (RH) and Temperature (°C) for different devices (e.g., Device ID 001, 002, 123). A table at the bottom lists alert history with columns for Alert, DeviceID, Name, Type, Humidity, Temperature, Date, and Time.

The bottom screenshot shows the **SMSPro Setup** configuration window. It is divided into several sections:

- Connection Setup:** Options for RS232 and GSM Modem, with fields for Part, Number ID, and Disconnect.
- Device Setup:** Configuration for individual devices, including Alarm Type (e.g., NO, NC, CS), Control CTR, and Phone1/Phone2 settings.
- Alarm Channel Configuration:** A table for configuring 8 different alarm channels with their respective types and control methods.
- Analog Channel:** Settings for Analog 1 and Analog 2, including Operation Mode, Range, Start Zero, Alert High, and Alert Low.
- Relay Control:** Controls for Relay 1, 2, and 3, including ON/OFF states and Time Lapse (seconds).
- Model:** Selection of the device model (SMS Pro-SX, GSM-S-TH only).



Automatic Calibration of Temperature and Humidity Sensor

- Intelligent calibration
- One button operation
- No technical skill is needed

Temperature & Humidity SMS Alert Controller

Features:

- Alarm Alert Modes—SMS, Phone Dial or Both
- Each alarm is associated with its own alarm SMS text
- Alarm SMS text is programmable by user remotely via SMS or Setup Software
- Configuration can be modified by user remotely via SMS or Setup Software
- Arm or Disarm by SMS or Setup Software
- Relay triggered by alarm or SMS command
- Verification of command by return SMS

Electrical & Physical Specification

- | | |
|--|---|
| <ul style="list-style-type: none"> • Programmable high/low temp/humidity values • 8 x Alarm Inputs (DC8~15V) N/C, N/O, State Change • 2 x Relay Outputs (Dry Contact) N/C, N/O • 4 x Mobile & 2 x Control Centre Phone Number • 2 x Central Station monitoring number • Internal siren • Internal Rechargeable Battery 12VDC, 1.2Ah (~ 7days) • Optional 12VDC, 6 Ah (~ 1 month) • Enclosure: IP65 ABS • Dimension: 215 x 185 x 85 mm • Operating Temp: -50 ~ 70°C • Standby: -55 ~ 85°C | <p>Power Consumption</p> <p>Send/Receive SMS: 500mA</p> <p>Standby Mode: 30mA</p> <p>Max. Rating: <2A</p> <p>Measuring Range</p> <p>AD Converter Resolution: 12 bit</p> <p>Temperature : -55 ~ 125 °C</p> <p>Accuracy: +/- 0.5 °C</p> <p>Sensor Resolution: 12 bit (0.0625 °C)</p> <p>Humidity: 1 ~ 100% RH</p> <p>Accuracy: +/- 5% RH</p> <p>Resolution: 12 bit</p> |
|--|---|

Models Available:

GSMS-THP

- ABS IP65 Enclosure
- 215 x 185 x 85 mm
- Internal Rechargeable Battery

GSMS-THC

- ABS IP65 Enclosure
- 145 x 125 x 60 mm
- 110/220VAC Input

GSMS-THA

- Aluminum IP67 Enclosure
- 235 x 150 x 80 mm
- Internal Rechargeable Battery



Optional: Externally Attached Temperature and Humidity Sensor